

Getting Untangled in the CYFAR Spider Web

CYFAR and Sustainability

c. **Sustainability.** Planning for sustaining community SCP projects is an obligation of CYFAR program professionals. Sustainability is the capacity of programs to continue to respond to identified community needs beyond the duration of the CYFAR funding. A sustained program maintains a focus consistent with its original goals and objectives, including the individuals, families, and communities it was originally intended to serve. Some programs contract in scope, while others expand, and still others maintain the original program activities. Some programs align with other organizations and institutions while others maintain their independence. One of the key elements of sustainability is retaining the goal of supporting at-risk families by providing continued benefits, regardless of the particular activities that are delivered. To most effectively sustain programs for children, youth and families, an intentional effort must be made early in the program planning process. Each SCP will develop and submit a sustainability plan including those factors that research has demonstrated to be important for program sustainability: Leadership Competence, Effective Collaboration, Understanding Community, Demonstrating Program Results, Strategic Funding, Staff Involvement and Integration, and Program Responsiveness. See information regarding sustainability at [Strategies for Sustainability of Grant-funded Programs](#). Proposals must show how these projects will be integrated into their ongoing Extension programs in order to illustrate sustainability and continued funding of these projects beyond the maximum five years of CYFAR federal funding.



From Original Spider Web to PSAT

CYFAR Suite

[Survey Builder](#)
[Logic Model](#)
[FindYourGroup](#)
[Spider Web](#)
[Annual Report](#)
[Coach](#)
[Admin](#)
[My Account](#)

CYFAR.org

Spider Web Surveys

New Survey

Program Sustainability Index (PSI)

As discussed in Sustaining Desired Results (Module 9)

The Program Sustainability Index (PSI) (Mancini & Marek, 2004) is a tool to help organizations and planning team members gauge its status on the seven essential elements of sustainability.¹The PSI has been modified from the original format to better meet the needs of military family support personnel. The index takes into account the elements that research has shown lead to sustaining benefits of an initiative to individuals, families, and communities overtime. It also gauges which elements are strong and which need to be strengthened. The PSI can help an organization start discussions about sustainability and become intentional about including these elements from the beginning of planning efforts.

Instructions

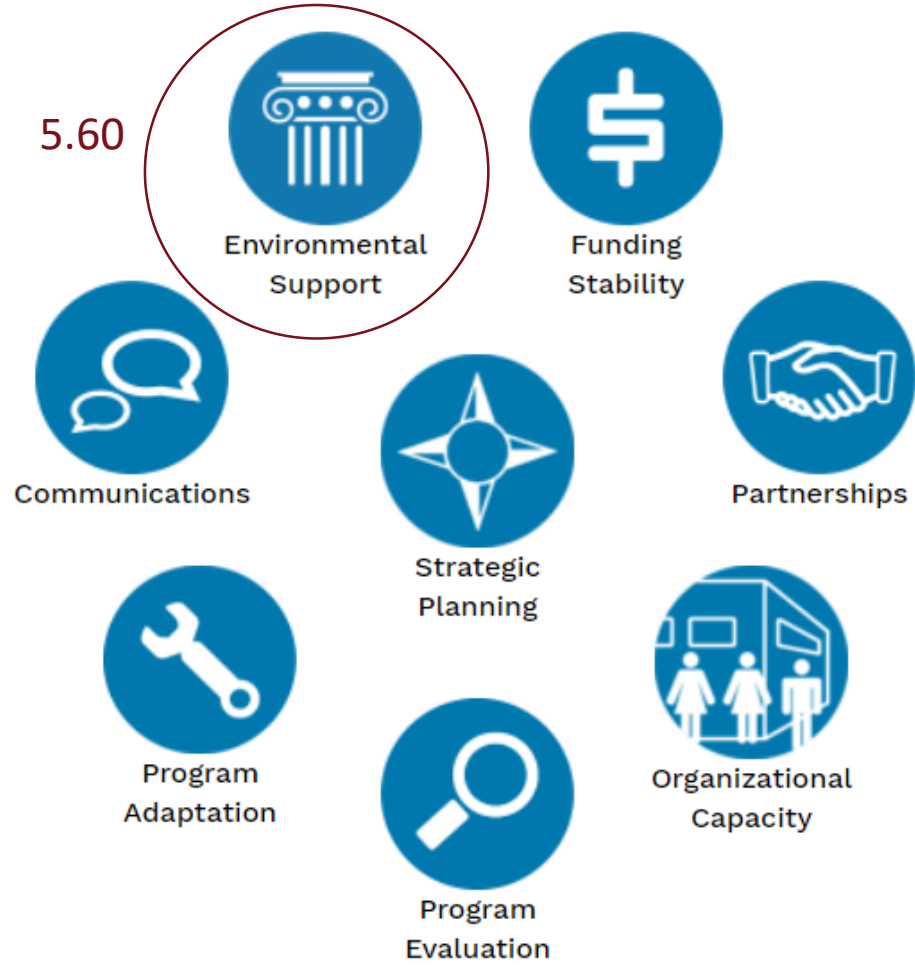
To use the PSI, team members rate efforts toward sustainability on each of the seven elements, treating each item as a program goal. Members decide individually whether they feel the item is "not at all true," "somewhat true," or "very much true" of their initiative. Items rated:

- **Not at all true-** Indicate it is completely absent and needs to be improved.
- **Somewhat true-** Indicate it is more or less present and active in the initiative but has room for improvement.
- **Very much true-** Indicate satisfaction with the current status and that the particular element is a prominent asset for the team.





CYFAR and PSAT



CYFAR and PSAT



CYFAR and PSAT



CYFAR and PSAT



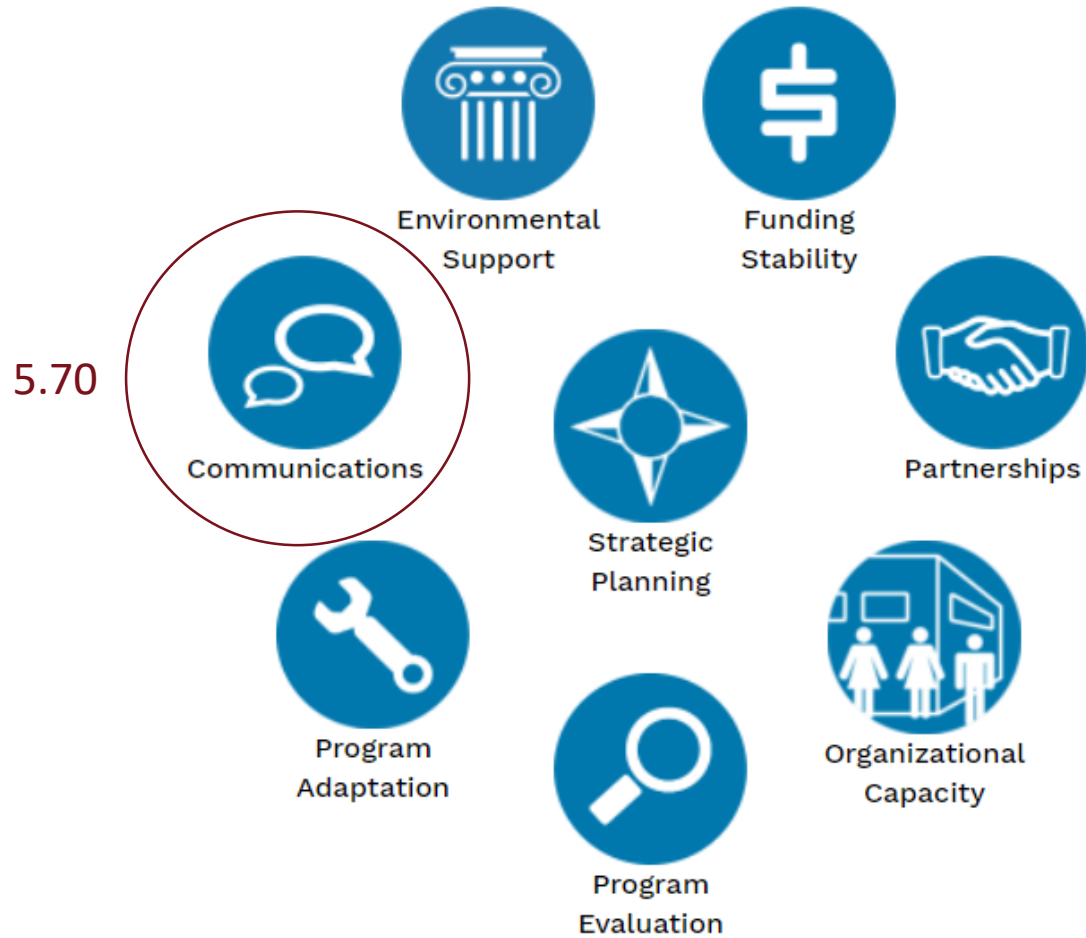
CYFAR and PSAT



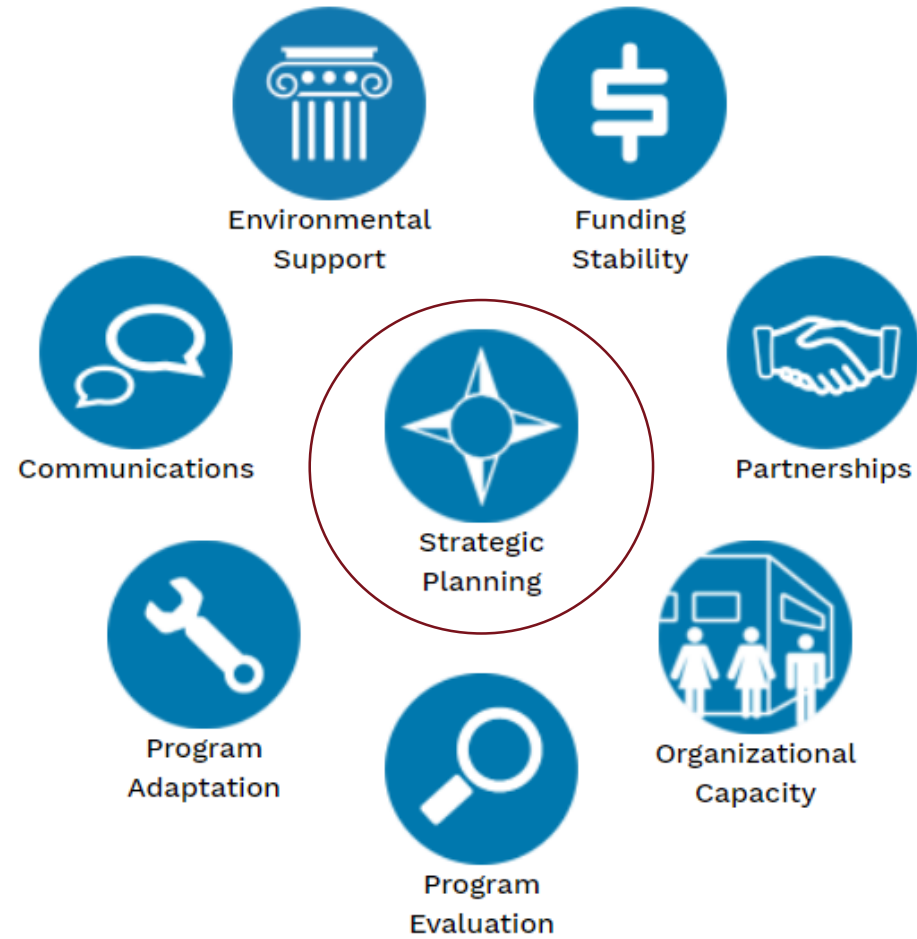
CYFAR and PSAT



CYFAR and PSAT



CYFAR and PSAT



5.58

Practice!

Dear Team Member,

The CYFAR PDTA Center has invited us to participate in completing the Spider Web Analysis Tool for Sustainability. The tool will aid our team in identifying ways to strengthen our ability to sustain after CYFAR SCP grant funding.

The tool will ask you to rate our CYFAR project on eight key domains that can influence a program's capacity for sustainability. Each domain is measured by 5 statements.

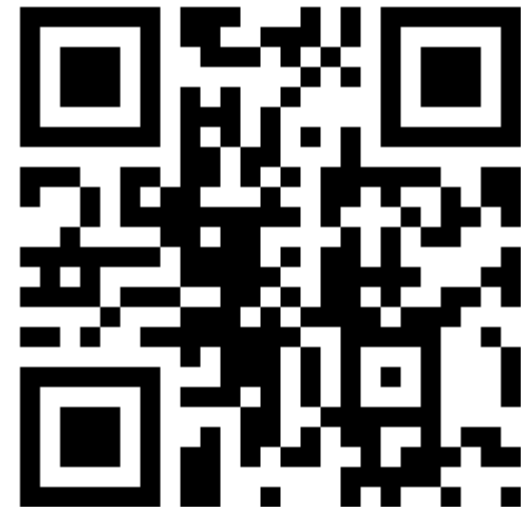
Our hope is to gain valuable insights from full team participation. However, know your participation is voluntary. Your identity and form responses will be kept confidential by your CYFAR PDTA Center Coach and the site administrators. After completing the tool, you will be given an opportunity to send a message to your CYFAR PDTA Center Coach should you wish to provide comments or feedback.

You can access the tool by clicking this URL:

cyfarsuite.t7stage.io/SpiderWeb/Responses/Create?key=6c6oy

Thank you in advance for your time. Please submit your responses by 06/03/2022.

<https://z.umn.edu/PDESpiderWeb>



Discussion

- What are some surprising results?
- What results did you expect?
- How can you use this information?
- What would next steps look like?